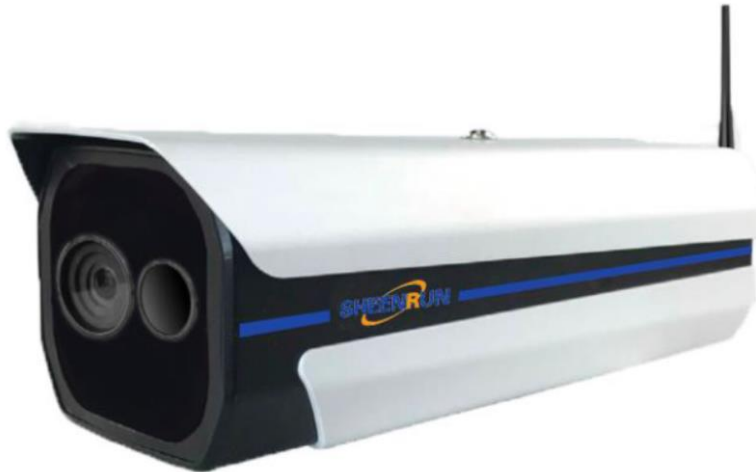


# DINU TRADING COMPANY

SHR-HVRM10 Human Body Temperature Measurement Thermal camera System



## Features

- Face capture, thermal imaging, visible light camera intelligent matching;
- Cost-effective, maintenance-free design;
- Proprietary patented black body, can work for a long time without affecting accuracy;
- Small size and easy installation;
- Set up a virtual personnel channel to automatically screen feverish people;
- Three-level alarm setting, accurate alarm for healthy people, re-examination people, and fever people;
- External black body, system measurement accuracy  $\leq \pm 0.3^{\circ}\text{C}$ ;
- Large field of view, multi-target accurate identification and tracking, up to 30 targets can be tracked at the same time, reducing missed detection rate.

## Application

Human body temperature measurement in large factories, shopping malls, supermarkets, banks, large offices, etc.

---

**NO. 37/7/1, PEPILYANA MAWATHA, NUGEGODA, SRI LANKA.**  
**TEL : +0094-112826279, +0094-773150986**  
**E-MAIL : [dinutrading@gmail.com](mailto:dinutrading@gmail.com)**  
**WEB : [www.dinutrading.com](http://www.dinutrading.com)**

## Technical data

SHR-HVRM10 Human Body Temperature Measurement Thermal camera System	
<b>Infrared</b>	
Resolution	384×288
Pixel size	Pixel 17μm
Focal length	10mm
FOV	37.6°×28.6
<b>Visible light</b>	
Resolution	1920×1080
<b>Black body</b>	
Accuracy	≤ ±0.2 °C
<b>Measurement</b>	
Range	20 °C - 50 °C
Accuracy	≤ ±0.3 °C
Correction	Built-in and external black body, auto correction
<b>Shield</b>	
Protection	IP65
External interface	1× RJ45, 1× 12V power supply
<b>Software function</b>	
Measurement	Face recognition, intelligent body temperature tracking measurement, intelligent body temperature correction
Alarm/Capture	Three-level alarm settings, alarm capture, sound alarm
Other specs settings	Video adjustment, alarm temperature setting (three levels), full screen mode setting, image segmentation setting, black body reference temperature setting, etc
Historical data query	Query and process historical data
Dual sensor match	Intelligent match for visible camera and thermal camera, sync alarm
<b>Environment</b>	
Working temperature	0 -30 °C
Storage temperature	-20 -60 °C
Working humidity	<90% (Non-condensing)

## Size & Dimensions

